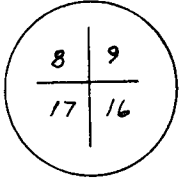


CERTIFIED LAND CORNER RECORDATION

DESCRIPTION OF CORNER EVIDENCE FOUND, AND ORIGINAL RECORD (If known)

T 15 N, R 69 W

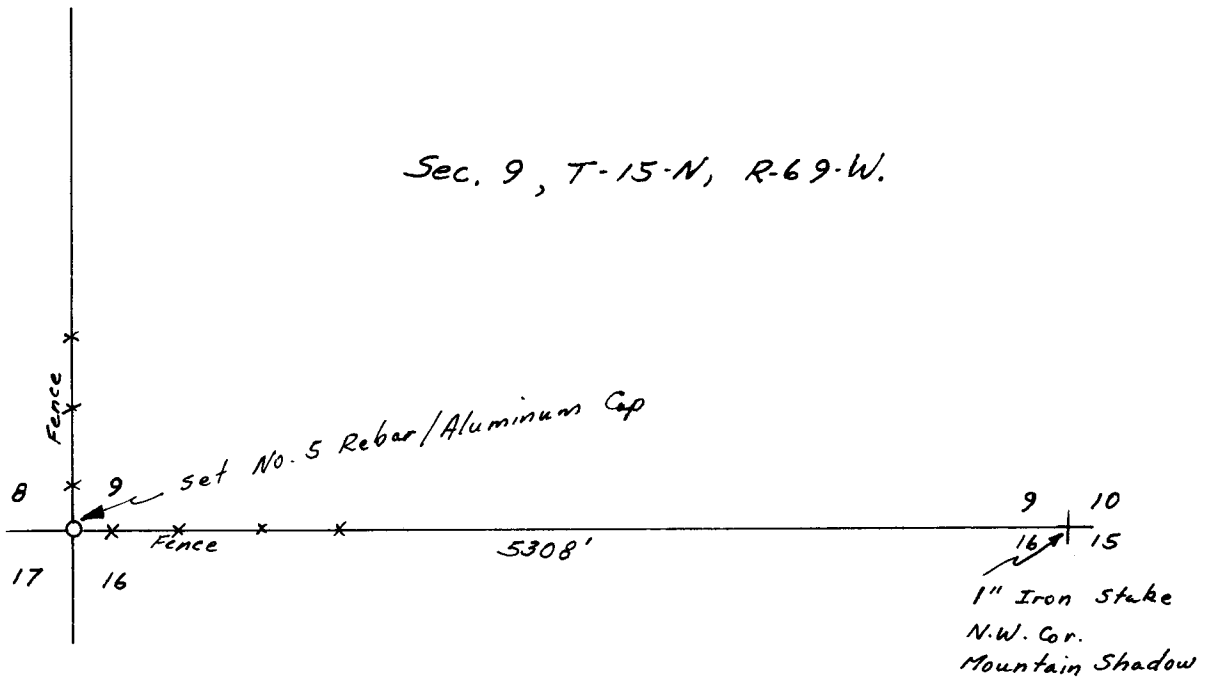


Found 20" x 10" x 6" Limestone lying loose at fence corner.
Original Monument described as a Granite Boulder 22" x 10" x 4".
Found stone contained well defined standard markings

DESCRIPTION OF MONUMENT AND ACCESSORIES ESTABLISHED
TO PERPETUATE THE ORIGINAL LOCATION OF THIS CORNER:

Set No. 5 Rebar with Aluminium I. D. Cap as Corner Monument. at Fence Corner. Set Found Stone beside Rebar as a reference marker.

SKETCH, WITH COURSE AND DISTANCE TO ADJACENT CORNER IF DETERMINED IN THIS SURVEY.
(May Sketch or Paste Reproduction on Reverse Side.)



Sec. 9, T-15-N, R-69-W.

I, Edward C. Fry certify that I have carefully performed ~~or reviewed~~ the work done on the diagrammed corner as reported on this recordation form and approve the same.

Edward C. Fry PE/LS No. 662
Signature of Surveyor 12-12-80 Registration No.

STATE OF WYOMING,
Office of Clerk and Recorder,
County of Taramie

001116

This "corner record" was filed for record on the 2 day of Jan, 19 81, was noted on the cross-index plat and is assigned page No. _____, in book No. _____.

Jan C Whitehead
County Official

Cross Index No. _____	T. _____	R. _____	Mer. _____
_____	T. _____	R. _____	Mer. _____
_____	T. _____	R. _____	Mer. _____
_____	T. _____	R. _____	Mer. _____
_____	T. _____	R. _____	Mer. _____
_____	T. _____	R. _____	Mer. _____
_____	T. _____	R. _____	Mer. _____